



BIO-WEST,

1063 West 1400 North
Logan, Utah
84321-2291
Ph: 435.752.4202
Fx: 435.752.0507
www.bio-west.com

Coastal Ecology
and Marine Biology

Environmental
Analysis
and Permitting

Geology/
Hydrogeology
and Remediation

Fisheries
and Aquatic Ecology

GIS Planning
and Analysis

Landscape
Architecture
and Environmental
Planning

Vegetation Resources

Watershed Sciences

Wetland Resources

Wildlife Resources

This is an abandoned, incomplete document that does not accurately reflect the ultimate wetlands delineation determination made by the Army Corps of Engineers in their study finalized on Oct. 22, 2020, which delineated 1.79 acres of wetlands on the 63 total acres of the future school site.

June 4, 2019

Wasatch County School District
101 East 200 North
Heber City, UT 84032

Subject: Wetland Delineation Findings at the Proposed 64-Acre High School Site in Heber City, Wasatch County, UT

To Whom It May Concern:

BIO-WEST, Inc. (BIO-WEST) is pleased to provide you with the results of the wetland delineation and aquatic resources survey at the approximately 64-acre project area in Heber City, UT. BIO-WEST personnel spent two field days surveying the property and collecting data as described in Task 1 of the Wasatch School District Contract effective May 16, 2019. The map illustrating the results of the Task 1 work is attached to this letter.

The total wetland area delineated within the project area is 14.4-acres, which includes 1.44-acres of wetland exhibiting a surface organic peat soil type. The wetlands can be generally classified as herbaceous, emergent wetlands, that are typically grazed and irrigated throughout the summer. The wetlands are likely at least partially supported by the existing irrigation practices on the project area.

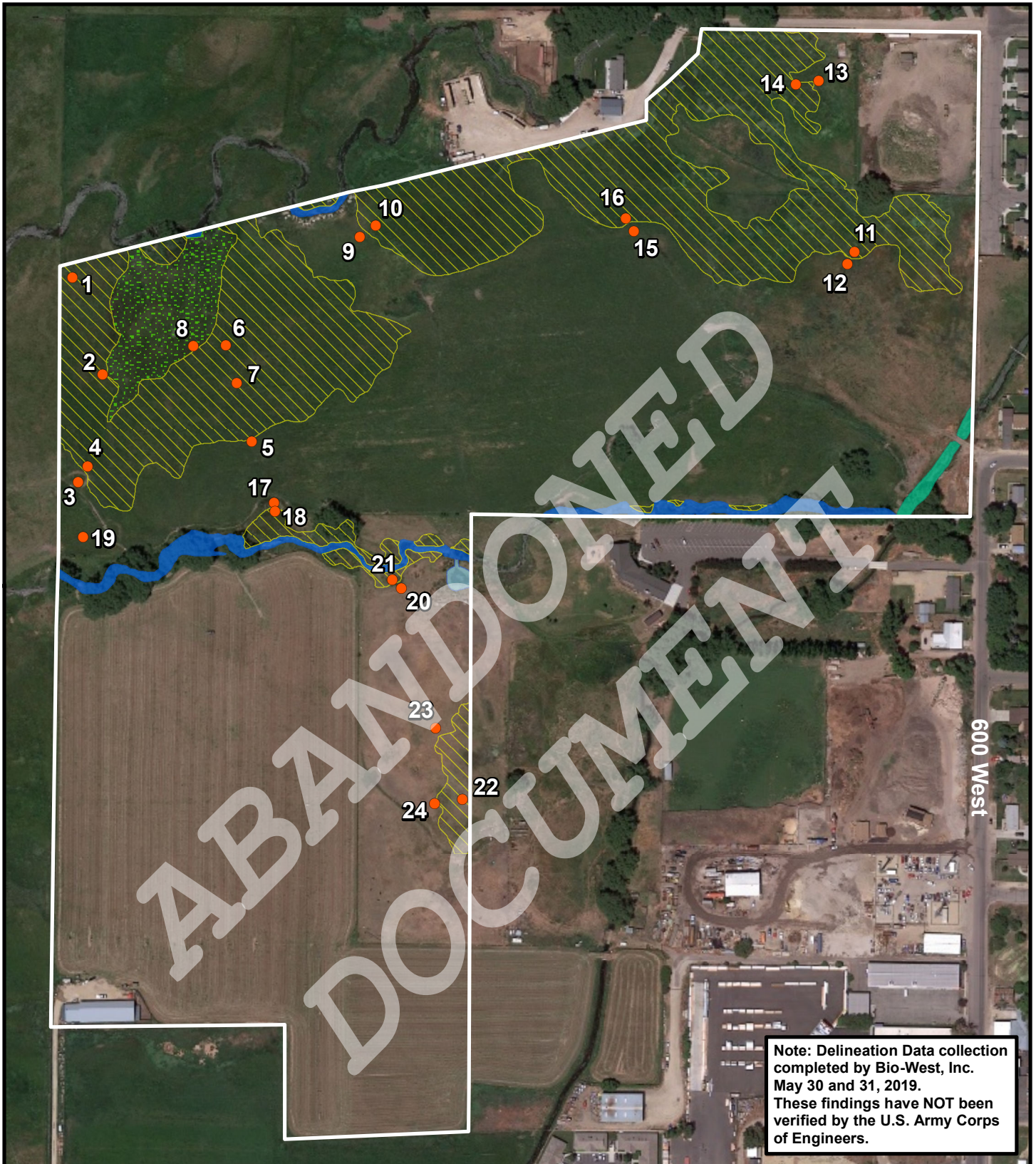
The survey also identified 1,831 linear feet of perennial stream channel, 256 linear feet of irrigation canal, and 0.06-acre of pond. It is our professional opinion that the areas described above would be considered jurisdictional by the U.S. Environmental Protection Agency and the U.S. Army Corps of Engineers under the authority of Section 404 of the Clean Water Act. The remainder of the project area, 48.38-acres of uplands, would not be regulated under Section 404. **Please understand that these findings represent our professional opinion as wetland scientists; however, the findings have not been discussed or verified with the regulatory agencies.**

If you wish to discuss these findings or you wish us to proceed with the remainder of the tasks included in the contract documents please do not hesitate to contact me. I can be reached by phone at the office (435) 752-4202, by mobile phone (435) 890-9311, or by e-mail at bthomas@bio-west.com. We appreciate your interest in BIO-WEST and look forward to speaking further with you.

Sincerely,

Robert W. Thomas
Professional Wetland Scientist, BIO-WEST, Inc.

Enclosure: Wasatch School District Wetland Delineation Map (06/04/2019)



Note: Delineation Data collection completed by Bio-West, Inc. May 30 and 31, 2019. These findings have NOT been verified by the U.S. Army Corps of Engineers.

BIO-WEST
www.bio-west.com
 435.752.4202

Coordinate System: NAD 1983 UTM Zone 12N
 Projection: Transverse Mercator
 Datum: North American 1983
 Imagery Source: Google Imagery (9/11/2018)

- Sample Point
- ▨ Emergent Wetland = 12.96 ac
- ▨ Emergent Wetland Peat = 1.44 ac
- Total Wetlands = 14.40 ac**
- Pond = 0.06 ac
- Stream = 0.94 ac / 1,831 lf
- Canal = 0.16 ac / 256 lf
- Project Area = 63.94 ac

Wasatch School District Wetland Delineation Heber, Utah

1 inch = 300 feet

