



# Wasatch County Midway - Seat E

Brent Titcomb - Wasatch County Clerk

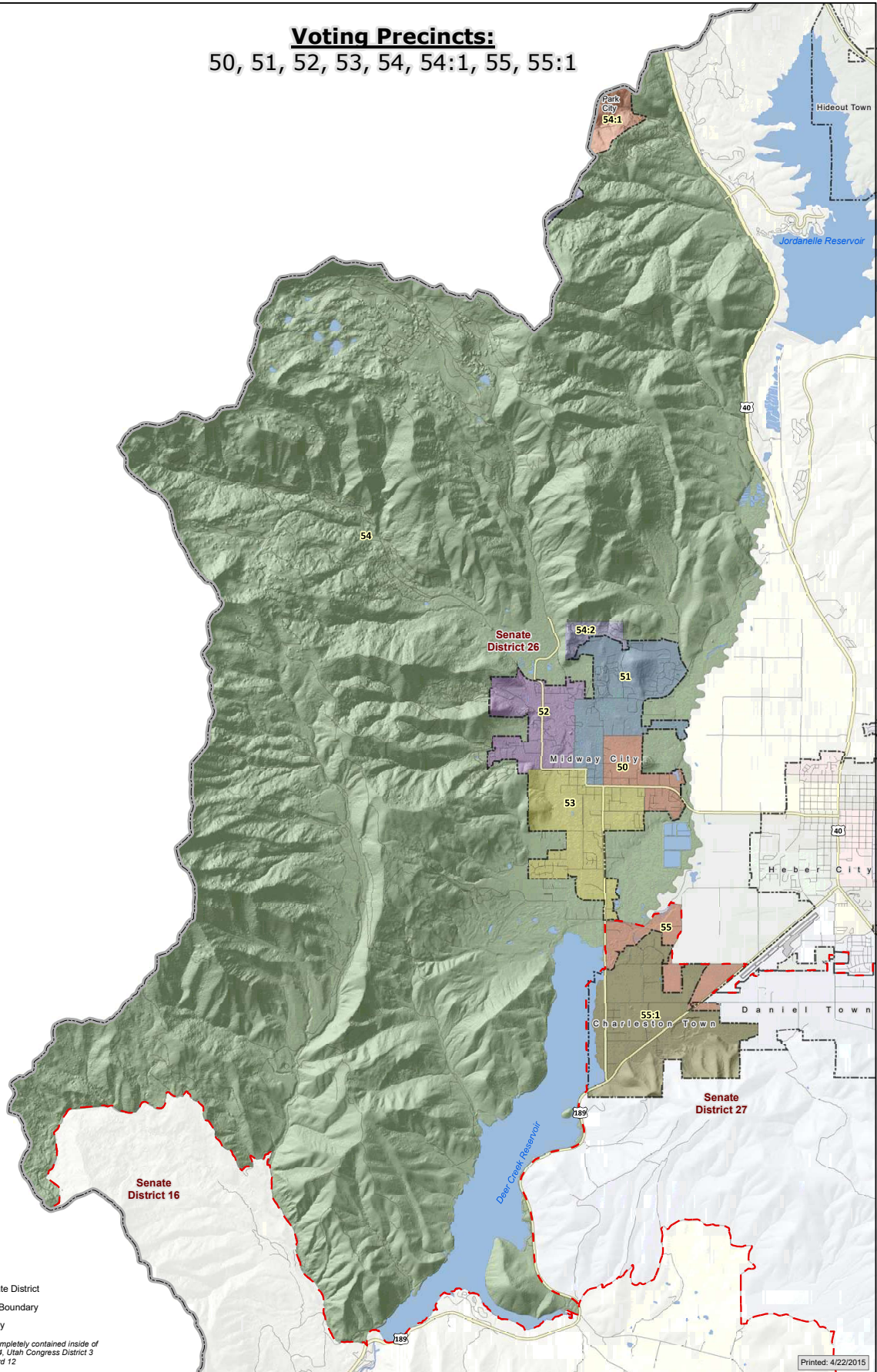
- Voting precinct boundaries approved by the  
Wasatch County Council, January 18, 2012.



## MIDWAY - COUNTY COUNCIL & SCHOOL BOARD DISTRICT 5

### Voting Precincts:

50, 51, 52, 53, 54, 54:1, 55, 55:1



- Legend**
- Utah Senate District
  - Municipal Boundary
  - Water Body

Wasatch County is completely contained inside of Utah House District 54, Utah Congress District 3 and Utah School Board 12