



Wasatch County County East - Seat F

Brent Titcomb - Wasatch County Clerk

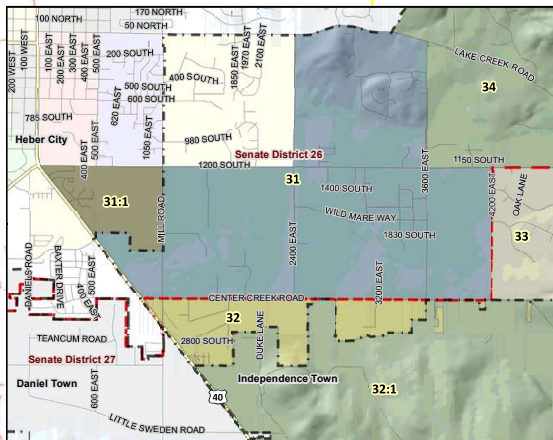
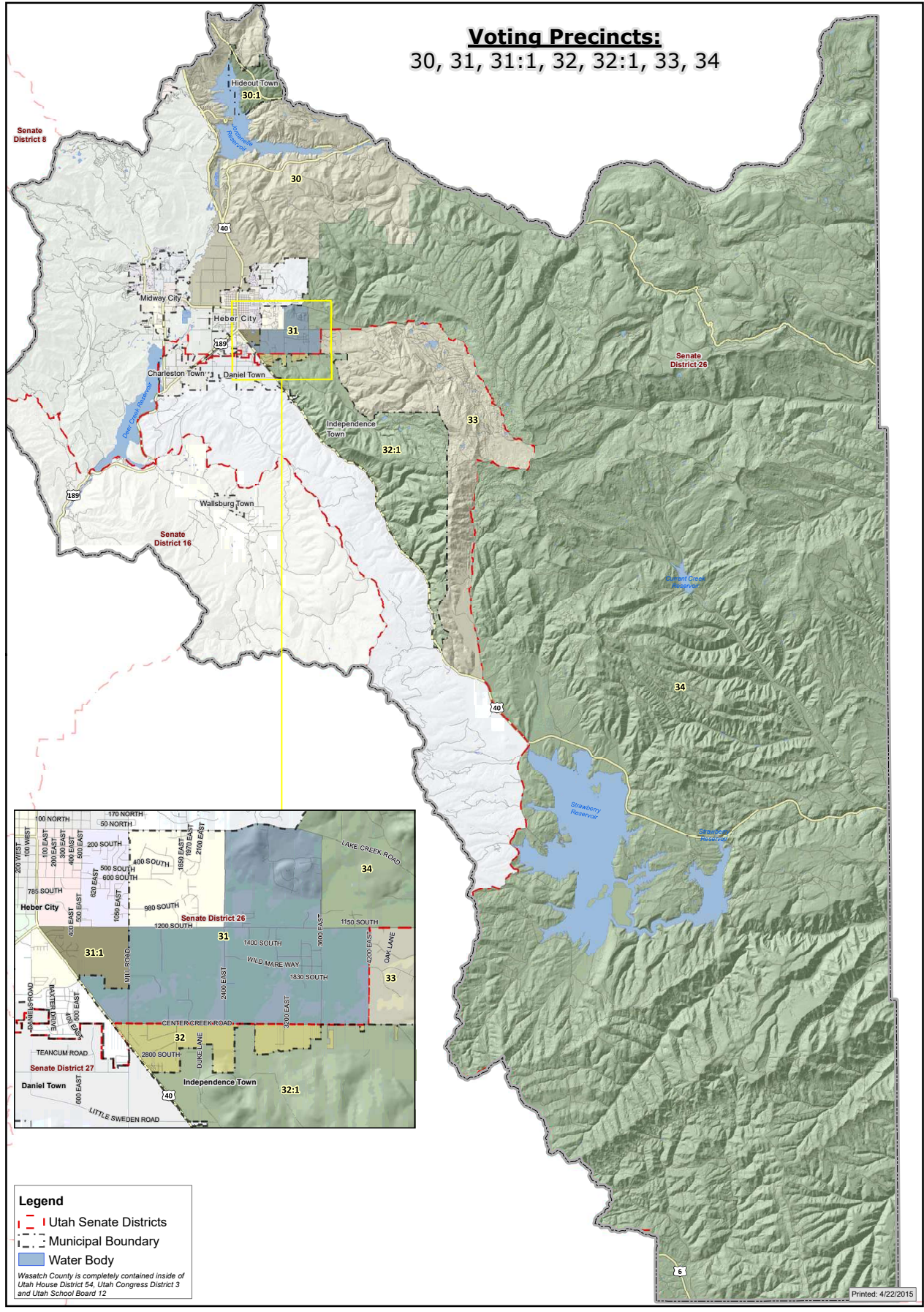
- Voting precinct boundaries approved by the
Wasatch County Council, January 18, 2012.



COUNTY EAST - COUNTY COUNCIL & SCHOOL BOARD DISTRICT 3

Voting Precincts:

30, 31, 31:1, 32, 32:1, 33, 34



Legend

- Utah Senate Districts
- Municipal Boundary
- Water Body

Wasatch County is completely contained inside of
Utah House District 54, Utah Congress District 3
and Utah School Board 12