

Utah's Long-term Demographic and Economic Projections

July 1, 2017



July 1, 2017

Utah Legislative Fiscal Analyst's Office
Utah Governor's Office of Management and Budget
State Capitol
Salt Lake City, Utah 84114

Subject: Letter of Transmittal

In accordance with our September 1, 2015 Memorandum of Understanding, the Kem C. Gardner Policy Institute is pleased to submit our 2017 vintage Long-term Demographic and Economic Projections.

This binder, and the accompanying flash drive, include the raw data files for many of the most requested data items at the state- and county-level, including population, school age population, retirement age population, population pyramids, components of population change, employment, and households. The complete datasets are available now upon request, and over the next several weeks will be placed online at www.gardner.utah.edu.

In the coming months, the Gardner Policy Institute will be preparing research briefs, fact sheets, snapshots, web-enabled visualizations, and other products to share these projections statewide. We will also prepare detailed documentation of our data sources and methods.

I extend my appreciation to the many entities that collaborated with us on this research product. I also want to thank our demographic and economic teams led by Pam Perlich and Juliette Tennert at the Gardner Policy Institute for their talent and professionalism in preparing these projections.

I'm confident these projections will help Utah state and local government better plan for the state's long-term needs in education, transportation, water, and other planning decisions. Utah businesses, nonprofit organizations, and the public will also benefit as we plan to keep Utah prosperous for years to come.

Sincerely,

Natalie Gochnour, Director

Table of Contents

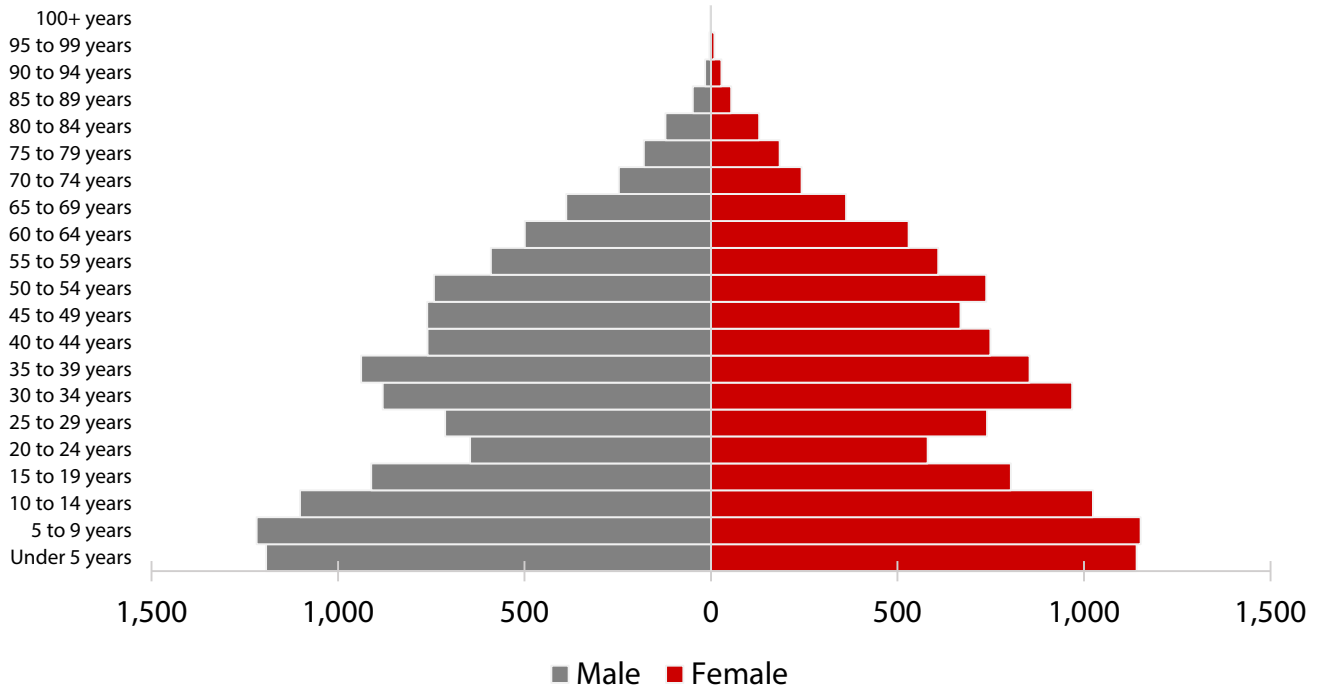
State of Utah	3
Beaver County	9
Box Elder County	15
Cache County	21
Carbon County	27
Daggett County	33
Davis County	39
Duchesne County	45
Emery County	51
Garfield County	57
Grand County	63
Iron County	69
Juab County	75
Kane County	81
Millard County	87
Morgan County	93
Piute County	99
Rich County	105
Salt Lake County	111
San Juan County	117
Sanpete County	123
Sevier County	129
Summit County	135
Tooele County	141
Uintah County	147
Utah County	153
Wasatch County	159
Washington County	165
Wayne County	171
Weber County	177

Wasatch County

Table 1: Wasatch Demographic Summary: 2015-2065

Year	Total Population				School Age Population (5-17)			Working Age Population (18-64)			Retirement Age Population (65+)		
	Total	Absolute Growth	Growth Rate	Median Age	Total	Absolute Growth	Growth Rate	Total	Absolute Growth	Growth Rate	Total	Absolute Growth	Growth Rate
2015	28,613			33.7	7,057			16,520			2,848		
2016	29,995	1,382	4.8%	34.1	7,276	220	3.1%	17,352	832	5.0%	3,094	245	8.6%
2017	31,470	1,475	4.9%	34.4	7,504	227	3.1%	18,253	902	5.2%	3,352	259	8.4%
2018	32,931	1,460	4.6%	34.8	7,732	229	3.0%	19,116	862	4.7%	3,654	302	9.0%
2019	34,348	1,417	4.3%	35.2	7,917	185	2.4%	20,023	907	4.7%	3,920	266	7.3%
2020	35,713	1,364	4.0%	35.5	8,115	198	2.5%	20,902	879	4.4%	4,189	269	6.9%
2021	37,061	1,349	3.8%	35.9	8,240	124	1.5%	21,746	844	4.0%	4,516	327	7.8%
2022	38,364	1,302	3.5%	36.2	8,297	58	0.7%	22,574	827	3.8%	4,858	341	7.6%
2023	39,625	1,262	3.3%	36.5	8,347	49	0.6%	23,378	805	3.6%	5,183	325	6.7%
2024	40,845	1,220	3.1%	36.8	8,372	25	0.3%	24,184	806	3.4%	5,483	300	5.8%
2025	42,027	1,183	2.9%	37.1	8,381	9	0.1%	24,953	769	3.2%	5,795	312	5.7%
2026	43,237	1,209	2.9%	37.3	8,378	(4)	0.0%	25,763	810	3.2%	6,096	301	5.2%
2027	44,452	1,215	2.8%	37.5	8,392	15	0.2%	26,553	789	3.1%	6,398	302	5.0%
2028	45,683	1,231	2.8%	37.7	8,452	60	0.7%	27,321	768	2.9%	6,688	290	4.5%
2029	46,924	1,241	2.7%	37.9	8,589	137	1.6%	28,037	717	2.6%	6,962	274	4.1%
2030	48,168	1,244	2.7%	38.0	8,765	176	2.0%	28,740	703	2.5%	7,213	251	3.6%
2031	49,398	1,230	2.6%	38.2	8,933	168	1.9%	29,427	687	2.4%	7,477	264	3.7%
2032	50,619	1,221	2.5%	38.3	9,101	168	1.9%	30,102	674	2.3%	7,749	272	3.6%
2033	51,834	1,215	2.4%	38.4	9,239	139	1.5%	30,790	689	2.3%	8,036	287	3.7%
2034	53,036	1,202	2.3%	38.6	9,411	171	1.9%	31,432	642	2.1%	8,333	297	3.7%
2035	54,218	1,181	2.2%	38.8	9,616	206	2.2%	32,017	584	1.9%	8,648	314	3.8%
2036	55,375	1,157	2.1%	39.0	9,842	226	2.3%	32,527	510	1.6%	9,007	359	4.1%
2037	56,506	1,131	2.0%	39.1	10,077	235	2.4%	33,001	474	1.5%	9,380	373	4.1%
2038	57,602	1,096	1.9%	39.3	10,312	235	2.3%	33,449	448	1.4%	9,757	377	4.0%
2039	58,655	1,053	1.8%	39.5	10,542	230	2.2%	33,869	420	1.3%	10,137	380	3.9%
2040	59,665	1,010	1.7%	39.8	10,763	221	2.1%	34,248	378	1.1%	10,539	401	4.0%
2041	60,666	1,001	1.7%	40.0	10,977	215	2.0%	34,588	340	1.0%	10,983	445	4.2%
2042	61,657	991	1.6%	40.3	11,182	205	1.9%	34,903	315	0.9%	11,459	475	4.3%
2043	62,633	976	1.6%	40.6	11,374	191	1.7%	35,199	297	0.8%	11,955	497	4.3%
2044	63,590	958	1.5%	40.8	11,548	175	1.5%	35,515	316	0.9%	12,434	479	4.0%
2045	64,526	936	1.5%	41.2	11,702	153	1.3%	35,870	355	1.0%	12,875	440	3.5%
2046	65,439	913	1.4%	41.5	11,832	130	1.1%	36,276	406	1.1%	13,263	388	3.0%
2047	66,331	892	1.4%	41.8	11,937	106	0.9%	36,684	409	1.1%	13,648	386	2.9%
2048	67,204	872	1.3%	42.1	12,018	81	0.7%	37,080	396	1.1%	14,047	399	2.9%
2049	68,061	857	1.3%	42.4	12,075	57	0.5%	37,493	413	1.1%	14,429	382	2.7%
2050	68,904	843	1.2%	42.7	12,112	36	0.3%	37,931	438	1.2%	14,785	356	2.5%
2051	69,741	837	1.2%	43.0	12,132	20	0.2%	38,381	450	1.2%	15,129	344	2.3%
2052	70,572	831	1.2%	43.3	12,139	7	0.1%	38,838	457	1.2%	15,465	336	2.2%
2053	71,397	825	1.2%	43.6	12,137	(2)	0.0%	39,317	480	1.2%	15,772	307	2.0%
2054	72,219	822	1.2%	43.8	12,132	(6)	0.0%	39,815	497	1.3%	16,054	282	1.8%
2055	73,042	824	1.1%	44.0	12,126	(5)	0.0%	40,296	481	1.2%	16,346	292	1.8%
2056	73,872	830	1.1%	44.0	12,126	(1)	0.0%	40,745	449	1.1%	16,664	318	1.9%
2057	74,715	842	1.1%	44.1	12,135	10	0.1%	41,225	480	1.2%	16,948	284	1.7%
2058	75,571	857	1.1%	44.2	12,159	24	0.2%	41,727	502	1.2%	17,206	258	1.5%
2059	76,445	873	1.2%	44.3	12,200	41	0.3%	42,236	509	1.2%	17,453	247	1.4%
2060	77,333	888	1.2%	44.4	12,259	60	0.5%	42,726	490	1.2%	17,715	262	1.5%
2061	78,237	904	1.2%	44.4	12,340	80	0.7%	43,183	456	1.1%	18,005	290	1.6%
2062	79,156	920	1.2%	44.4	12,442	102	0.8%	43,591	408	0.9%	18,340	335	1.9%
2063	80,094	938	1.2%	44.4	12,565	124	1.0%	43,996	405	0.9%	18,677	337	1.8%
2064	81,050	955	1.2%	44.4	12,710	145	1.2%	44,399	403	0.9%	19,016	339	1.8%
2065	82,018	969	1.2%	44.3	12,874	163	1.3%	44,792	393	0.9%	19,366	350	1.8%

Wasatch: 2010 Population Pyramid



Wasatch: 2065 Population Pyramid

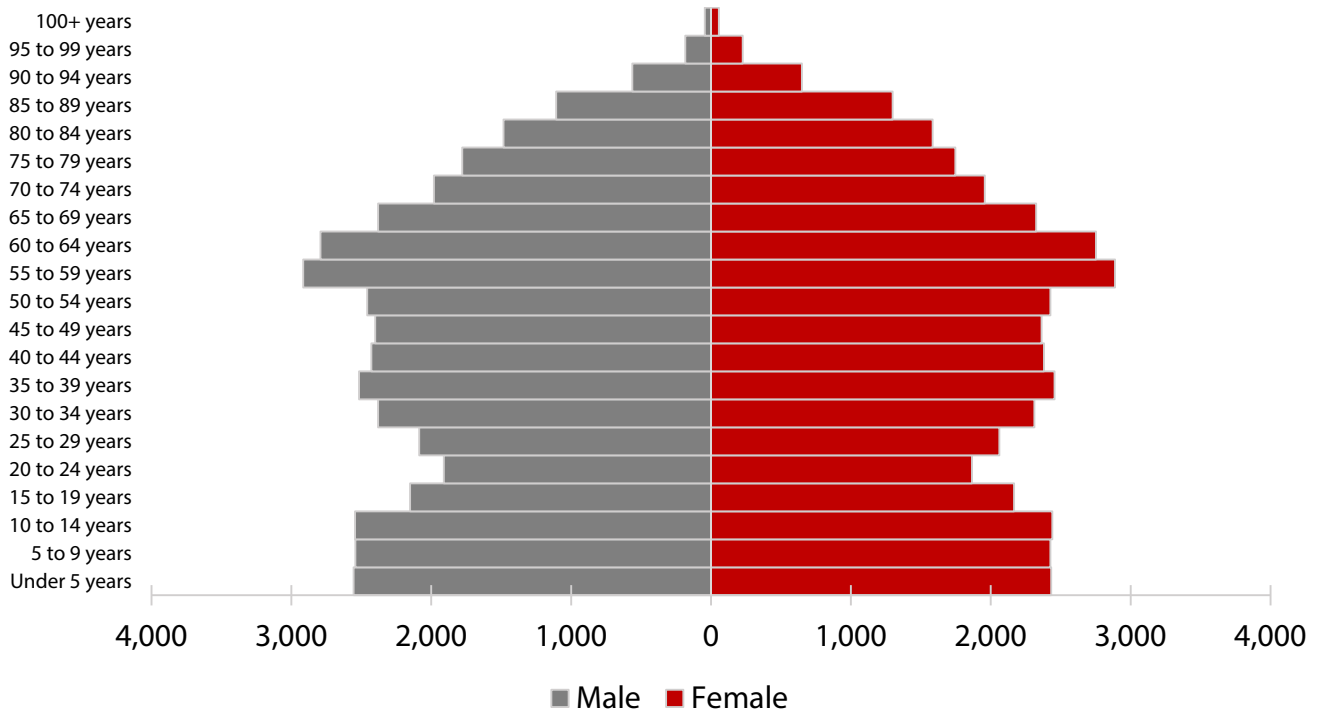
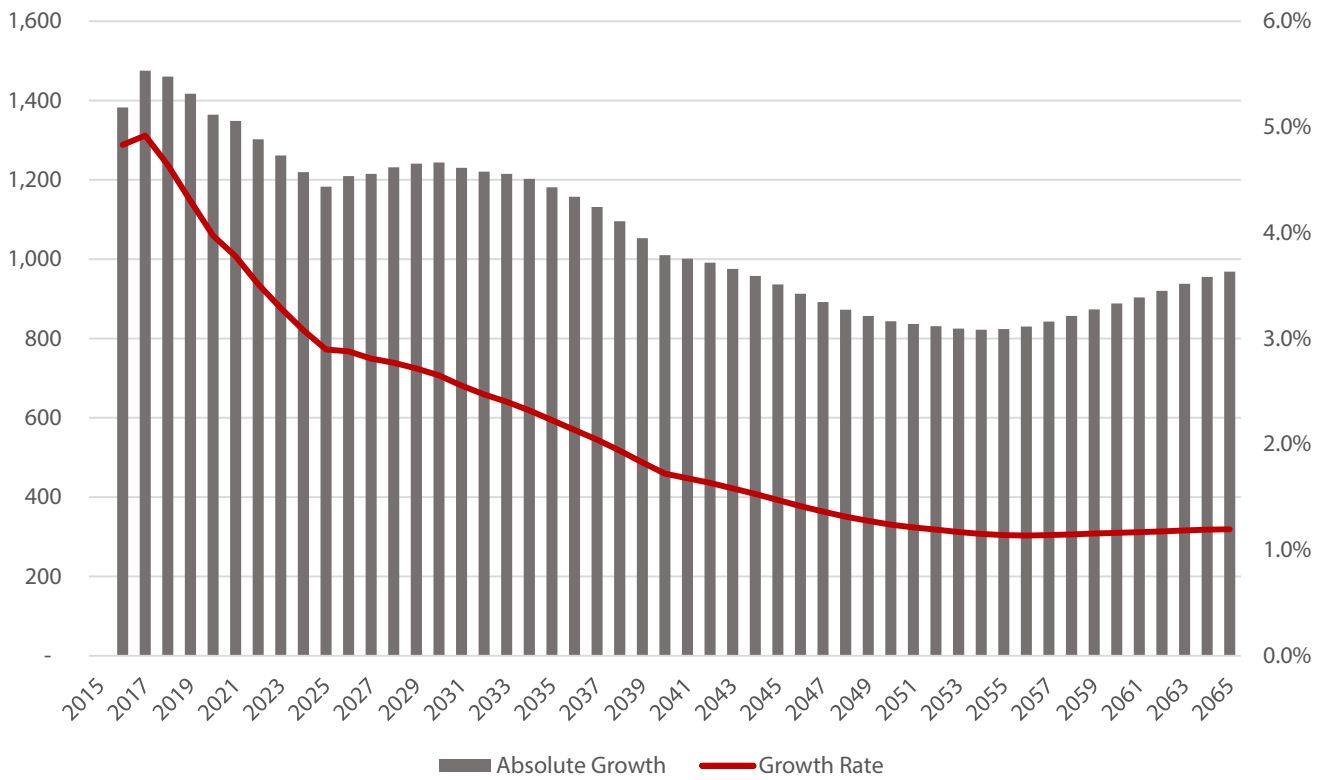


Table 2: Wasatch Components of Change

Year	County	Births	Deaths	Natural Increase	Net Migration	Net Growth
2015	Wasatch	472	123	349	922	1,271
2016	Wasatch	441	143	298	1,084	1,382
2017	Wasatch	440	159	281	1,194	1,475
2018	Wasatch	456	171	286	1,175	1,460
2019	Wasatch	474	183	291	1,126	1,417
2020	Wasatch	492	196	297	1,068	1,364
2021	Wasatch	511	180	331	1,018	1,349
2022	Wasatch	531	191	340	962	1,302
2023	Wasatch	552	201	351	911	1,262
2024	Wasatch	574	211	362	857	1,220
2025	Wasatch	596	222	374	808	1,183
2026	Wasatch	619	232	387	823	1,209
2027	Wasatch	643	243	401	814	1,215
2028	Wasatch	668	253	414	817	1,231
2029	Wasatch	692	264	427	814	1,241
2030	Wasatch	715	276	439	804	1,244
2031	Wasatch	737	288	450	781	1,230
2032	Wasatch	756	300	456	764	1,221
2033	Wasatch	774	313	461	754	1,215
2034	Wasatch	788	326	463	740	1,202
2035	Wasatch	800	339	461	720	1,181
2036	Wasatch	808	352	456	702	1,157
2037	Wasatch	814	366	448	683	1,131
2038	Wasatch	818	380	438	657	1,096
2039	Wasatch	819	394	425	627	1,053
2040	Wasatch	819	408	410	600	1,010
2041	Wasatch	816	422	394	607	1,001
2042	Wasatch	813	437	377	614	991
2043	Wasatch	810	451	359	616	976
2044	Wasatch	807	465	342	616	958
2045	Wasatch	805	479	326	610	936
2046	Wasatch	805	494	311	602	913
2047	Wasatch	806	508	298	594	892
2048	Wasatch	808	522	286	586	872
2049	Wasatch	813	536	277	580	857
2050	Wasatch	819	550	269	574	843
2051	Wasatch	827	564	263	573	837
2052	Wasatch	837	578	259	572	831
2053	Wasatch	849	592	257	568	825
2054	Wasatch	862	606	256	566	822
2055	Wasatch	876	620	256	568	824
2056	Wasatch	891	634	257	573	830
2057	Wasatch	906	648	258	585	842
2058	Wasatch	922	663	259	598	857
2059	Wasatch	937	678	260	613	873
2060	Wasatch	953	693	260	628	888
2061	Wasatch	967	708	259	644	904
2062	Wasatch	980	723	257	663	920
2063	Wasatch	993	739	254	684	938
2064	Wasatch	1,004	755	249	706	955
2065	Wasatch	1,014	771	243	725	969

Wasatch: Absolute and % Growth



Wasatch: Components of Change

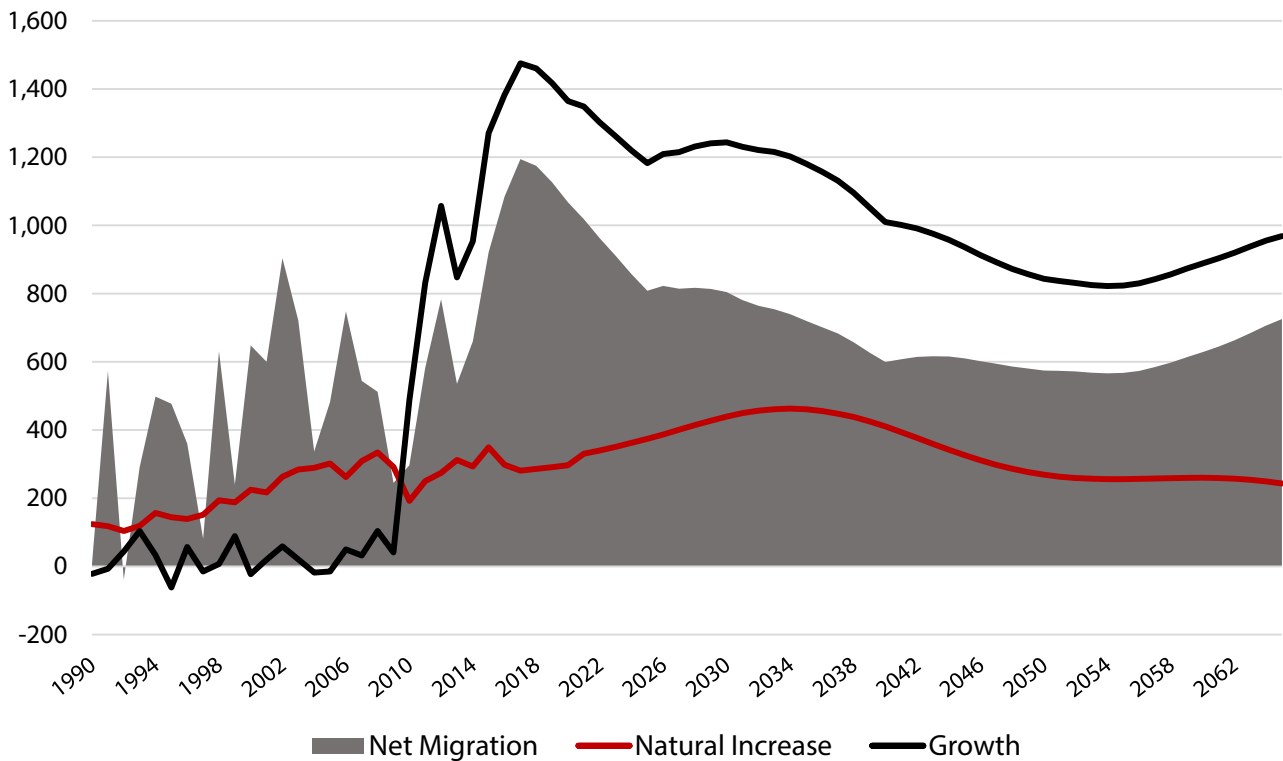


Table 3: Wasatch Employment and Households

Year	Total Employment			Total Households			
	Total	Absolute Growth	Growth Rate	Total	Absolute Growth	Growth Rate	Average Size
2015	14,111			9,329			3.04
2016	14,633	522	3.7%	9,869	540	5.8%	3.01
2017	15,100	467	3.2%	10,444	574	5.8%	2.98
2018	15,521	421	2.8%	11,022	579	5.5%	2.96
2019	15,919	398	2.6%	11,601	578	5.2%	2.93
2020	16,292	374	2.3%	12,171	570	4.9%	2.91
2021	16,644	352	2.2%	12,748	577	4.7%	2.88
2022	16,983	339	2.0%	13,308	560	4.4%	2.85
2023	17,313	330	1.9%	13,855	547	4.1%	2.83
2024	17,638	324	1.9%	14,397	542	3.9%	2.81
2025	17,957	320	1.8%	14,934	537	3.7%	2.79
2026	18,274	317	1.8%	15,477	543	3.6%	2.77
2027	18,590	315	1.7%	16,023	546	3.5%	2.75
2028	18,903	314	1.7%	16,563	540	3.4%	2.73
2029	19,216	312	1.7%	17,109	546	3.3%	2.72
2030	19,527	311	1.6%	17,655	546	3.2%	2.70
2031	19,837	310	1.6%	18,196	541	3.1%	2.69
2032	20,144	307	1.5%	18,725	529	2.9%	2.68
2033	20,448	305	1.5%	19,270	545	2.9%	2.66
2034	20,750	302	1.5%	19,804	534	2.8%	2.65
2035	21,049	299	1.4%	20,301	497	2.5%	2.65
2036	21,346	297	1.4%	20,790	490	2.4%	2.64
2037	21,641	295	1.4%	21,282	492	2.4%	2.63
2038	21,934	293	1.4%	21,757	475	2.2%	2.62
2039	22,225	292	1.3%	22,216	459	2.1%	2.61
2040	22,517	291	1.3%	22,646	430	1.9%	2.61
2041	22,808	291	1.3%	23,098	452	2.0%	2.60
2042	23,098	291	1.3%	23,559	461	2.0%	2.59
2043	23,389	291	1.3%	24,010	451	1.9%	2.58
2044	23,681	291	1.2%	24,470	460	1.9%	2.57
2045	23,972	292	1.2%	24,921	451	1.8%	2.56
2046	24,264	292	1.2%	25,372	451	1.8%	2.55
2047	24,557	293	1.2%	25,810	438	1.7%	2.54
2048	24,850	293	1.2%	26,240	430	1.7%	2.53
2049	25,144	294	1.2%	26,673	433	1.6%	2.52
2050	25,439	295	1.2%	27,092	419	1.6%	2.52
2051	25,735	296	1.2%	27,506	414	1.5%	2.51
2052	26,032	297	1.2%	27,910	404	1.5%	2.50
2053	26,330	298	1.1%	28,300	390	1.4%	2.49
2054	26,629	299	1.1%	28,683	383	1.4%	2.49
2055	26,929	300	1.1%	29,077	393	1.4%	2.48
2056	27,231	301	1.1%	29,457	380	1.3%	2.48
2057	27,533	302	1.1%	29,843	386	1.3%	2.47
2058	27,836	303	1.1%	30,231	388	1.3%	2.47
2059	28,140	304	1.1%	30,641	409	1.4%	2.47
2060	28,444	304	1.1%	31,060	419	1.4%	2.46
2061	28,749	305	1.1%	31,457	397	1.3%	2.46
2062	29,054	305	1.1%	31,850	393	1.2%	2.46
2063	29,359	305	1.0%	32,254	404	1.3%	2.45
2064	29,663	304	1.0%	32,678	424	1.3%	2.45
2065	29,967	303	1.0%	33,104	427	1.3%	2.45