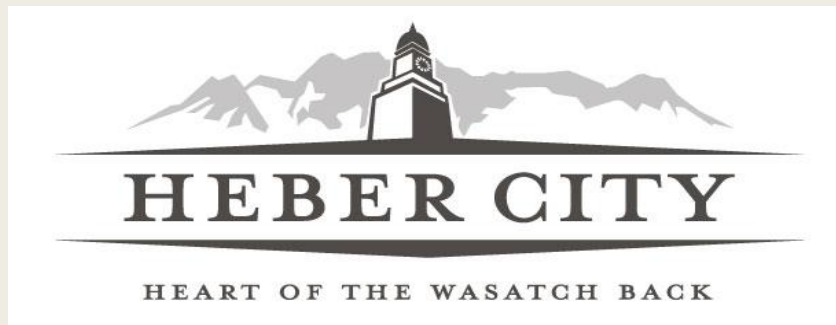


PARK CITY BOARD OF REALTORS

Thursday, September 27, 2018

Red Ledges



Overview...



New Heber City Manager

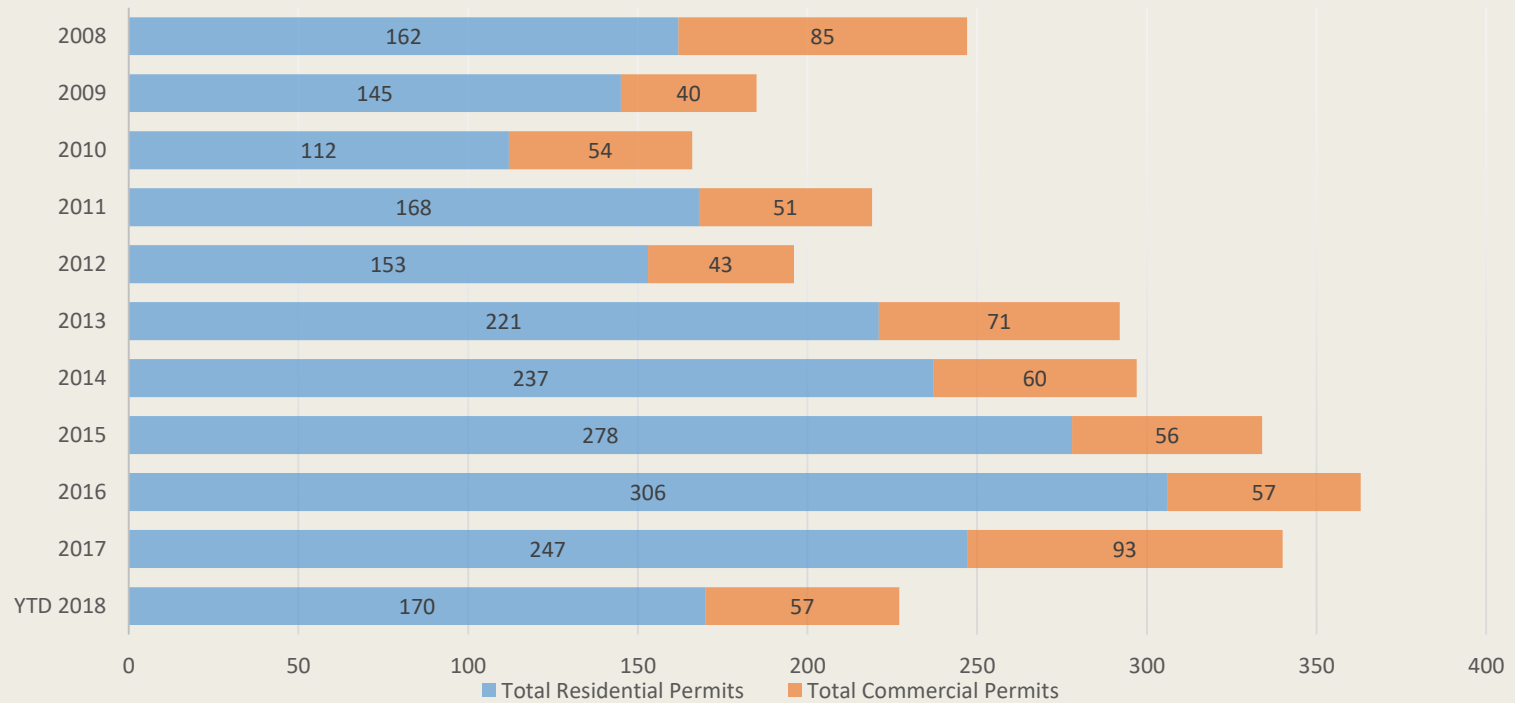


- 18 Years Experience as City Manager
- Broad Based Experience (GA, FL, CA, & UT)
- MPA from Florida State University
- Undergraduate Degree from University of Utah

U.S. Census Bureau: Heber City, Wasatch County rank among nations fastest growing communities

- 2018: Heber was the fastest growing micropolitan area in the country, and Wasatch County itself was the third fastest growing county in the country.
- Growth Factors Contributed to:
 - *Better than average air quality;*
 - *Easy access to outdoor recreation at three state parks and national forest areas;*
 - *A robust tourism industry;*
 - *A high caliber school system;*
 - *Quality health system; and*
 - *Small town feel.*

Construction Statistics 2008-2018

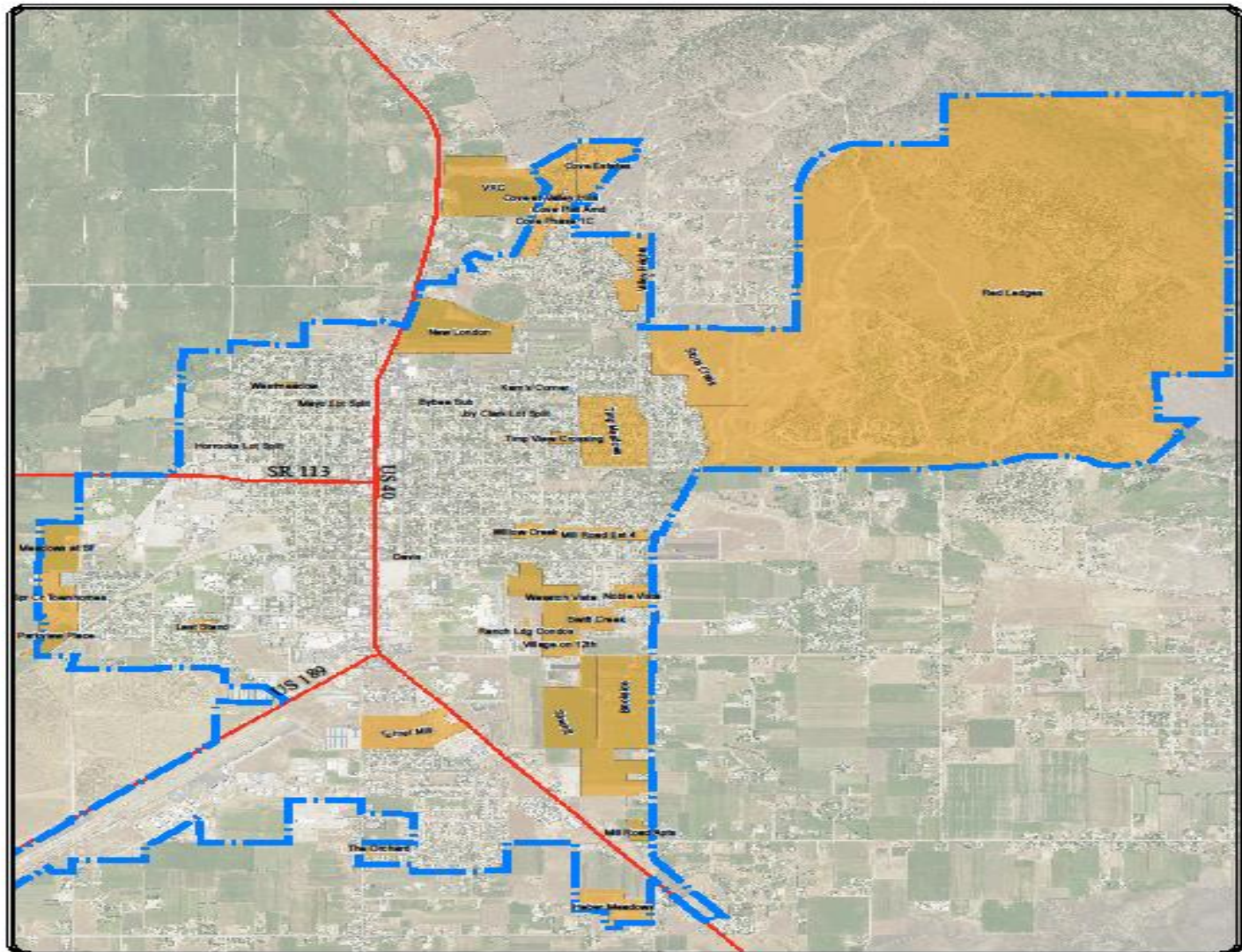


Comparison Park City/Heber

Category	Park City	Heber
^Population Estimate	8,378	15,792
^Households	3,407	4,122
^Owner Occupied	59.4%	61.1%
*Medium Price	\$1.93M	\$506,000
^Medium House Hold Income	\$105,604	\$63,627
^Total Retail Sales Per Capita	\$39,479	\$18,976
Money Magazine's Best 50 Places to Live	N/A	44th

*Park City Board of Realtors/2QTR '18

^Census Data/2017

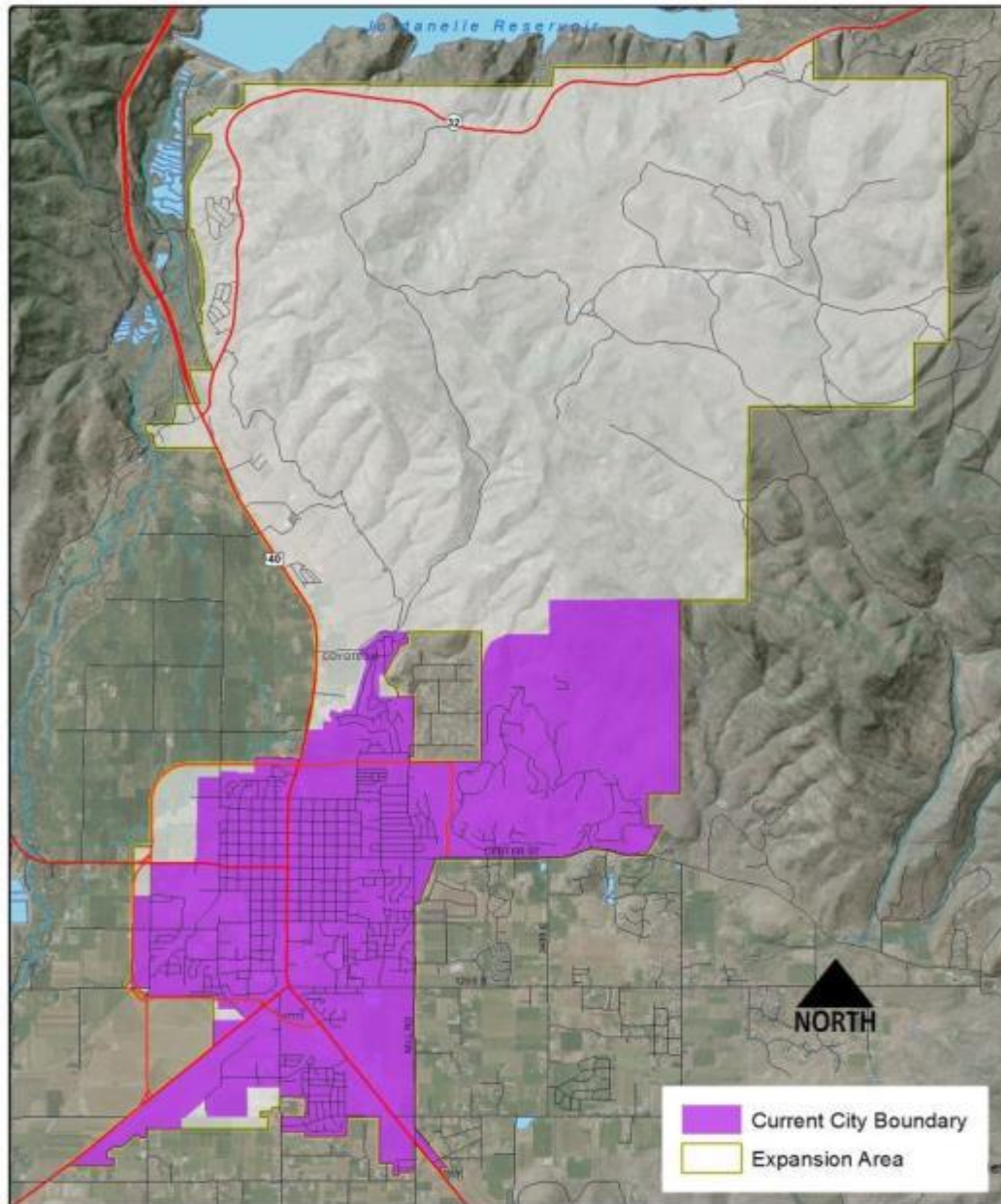


Heber City Developments
 September 17, 2018

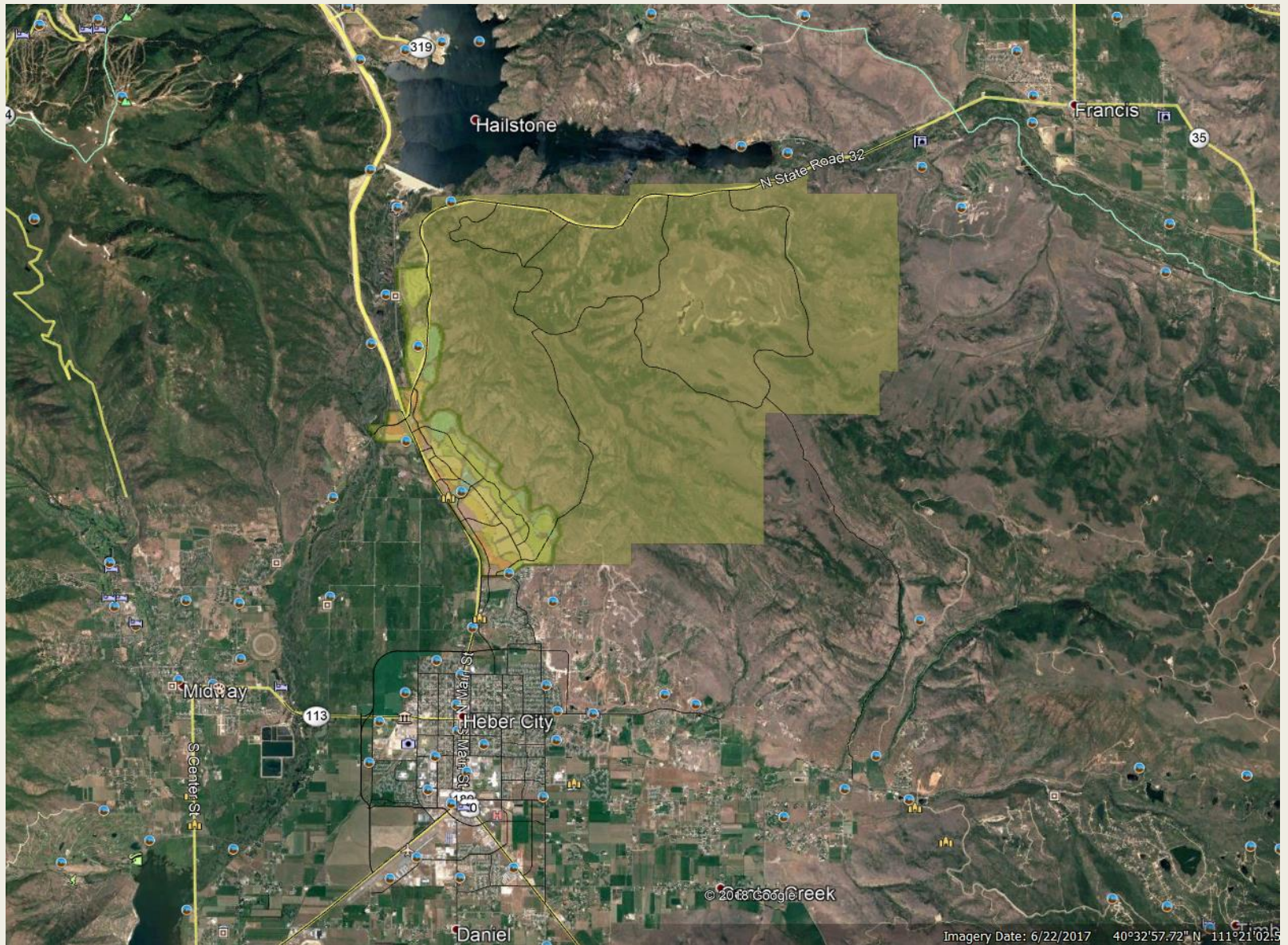
Heber Annexation Policy Plan

- Adopted Summer 2018
- Prescribes areas of annexation interest
- Key areas of interest:
 - *Sorenson Property (+/-10,000 ac)*
 - *North Village (+/- 2,000 ac)*

Annexation Policy Plan



North Village and Sorenson Areas





Hailstone

Hideout

319

248

Marion

40

N Main St

Image Landsat / Copernicus
© 2018 Google



Hailstone

Jordanelle Reservoir

319

Image Landsat / Copernicus
© 2018 Google

Google

Heber Valley Bypass

PUBLIC NOTICE

Heber Valley Bypass Corridor **PLANNING STUDY**

AND MAIN STREET CORRIDOR PLANNING STUDY

To address growth and traffic congestion, the Utah Department of Transportation (UDOT) and Heber City are conducting planning studies for the Heber Valley Bypass Corridor and the Main Street Corridor. Please join the project teams for an open house to provide your input on both of these studies in an effort to help the community create a unified vision and goal for the Heber Valley Bypass and Main Street Corridors.



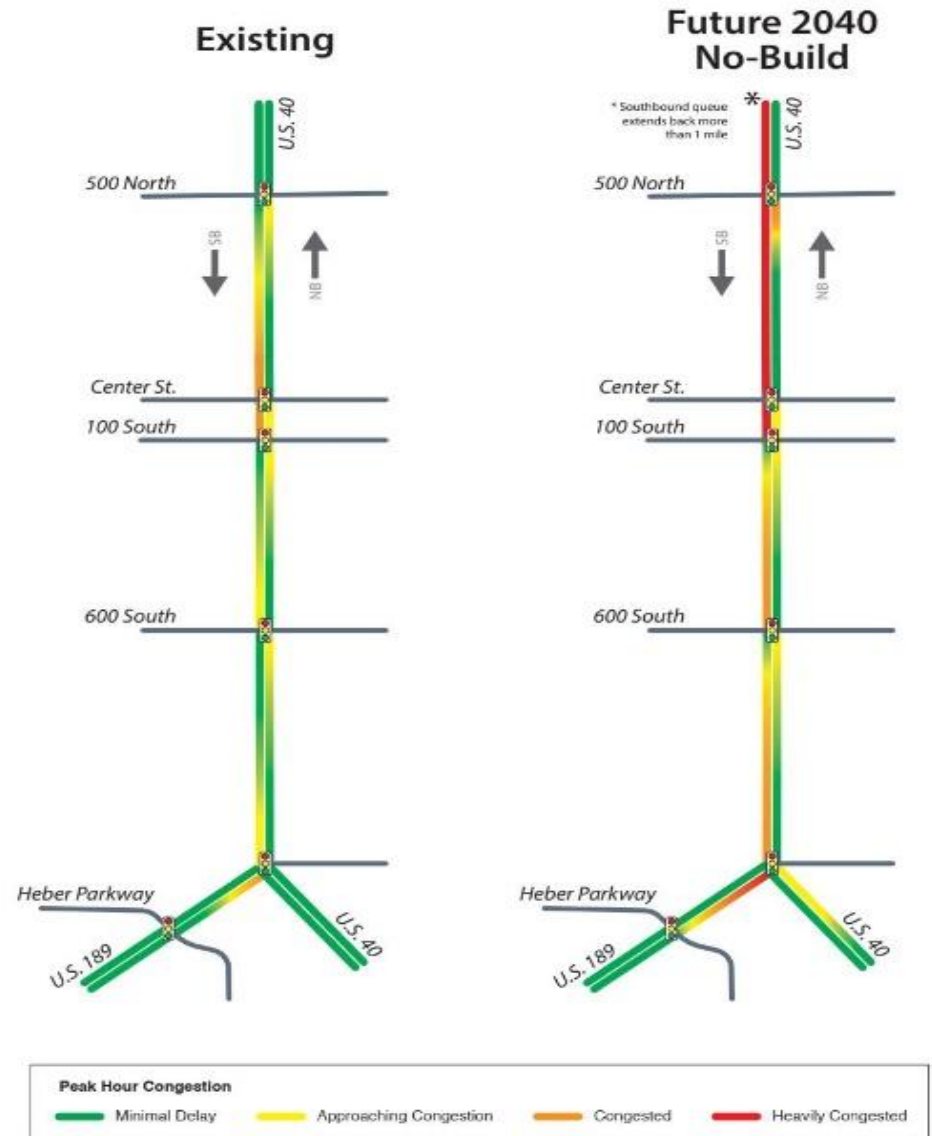
**PUBLIC
OPEN
HOUSE**

August 8, 2018 | 6-8 p.m.
Wasatch County Senior Center
465 East 1200 South
Heber, UT 84032

Hwy 40 Traffic Volumes

Thru
 Historic Heber
 Downtown

CONGESTION LEVELS



Original Bypass Alignment



Sewer Fields Alternative Alignment



Option A—South Bypass



Option B—South Bypass



Option C—South Bypass





A HEALTHY DOWNTOWN IS KEY TO A STRONG COMMUNITY.

A city's downtown area has an important and unique role in economic and social development. Downtowns create a critical mass of activities where commercial, cultural, and civic activities are concentrated. This concentration facilitates business, learning, and cultural exchange.



Historic Downtown Initiatives



- Splash Pad
- Commercial Sized Fire Pits
- Art in Public Places Program
- By-pass
- Beautification



Heber Airport: Russ McDonald Field (HCR)



Heber Valley Airport: Did you know...

- Founded in 1947
- Public use, municipally owned general aviation airport
- 6,900-foot long runway
- 76 aircraft storage hangers
- Serves a variety of aircraft from gliders to recreational aircraft to business jets
- Hosts a variety of general aviation services such as fuel, aircraft maintenance, flight training, and special events

Heber's General Aviation Airport: Community Benefits

- Public airport
- Local police and fire support/wildfire control operations
- Access to nation's air transportation system
- Movement of people and goods—keeps business moving
- Place of learning and inspiration—aviation to the next generation
- Support U.S. Military
- Fun and recreation



Dollars and Sense: An airport's economic impact

- Direct Impacts—generated directly from the airport itself.
 - Payroll from airport employees and on-airport businesses, tenants, operators such as FBO, net jet, wild fires, etc.
- Indirect Impacts—measures the money spent in a community from the users of an airport
 - Money visitors using the airport spend in a community, such as hotels, restaurants, rental cars, entertainment, etc.
- Induced Impacts (multiplier effects)—increase of money from an injection of spending

Aviation: Key to Economic Growth

Category	Utah General Aviation Airports	Heber City Airport
*Total Employment	3,673	112
*Total Payroll	\$96,67 M	\$2,250,000
*Total Output/Economic Activity	\$274.28 M	\$8,237,300
	Total Operations:	29,000

*Data generated from 2003 DOT Economic Impact Study

