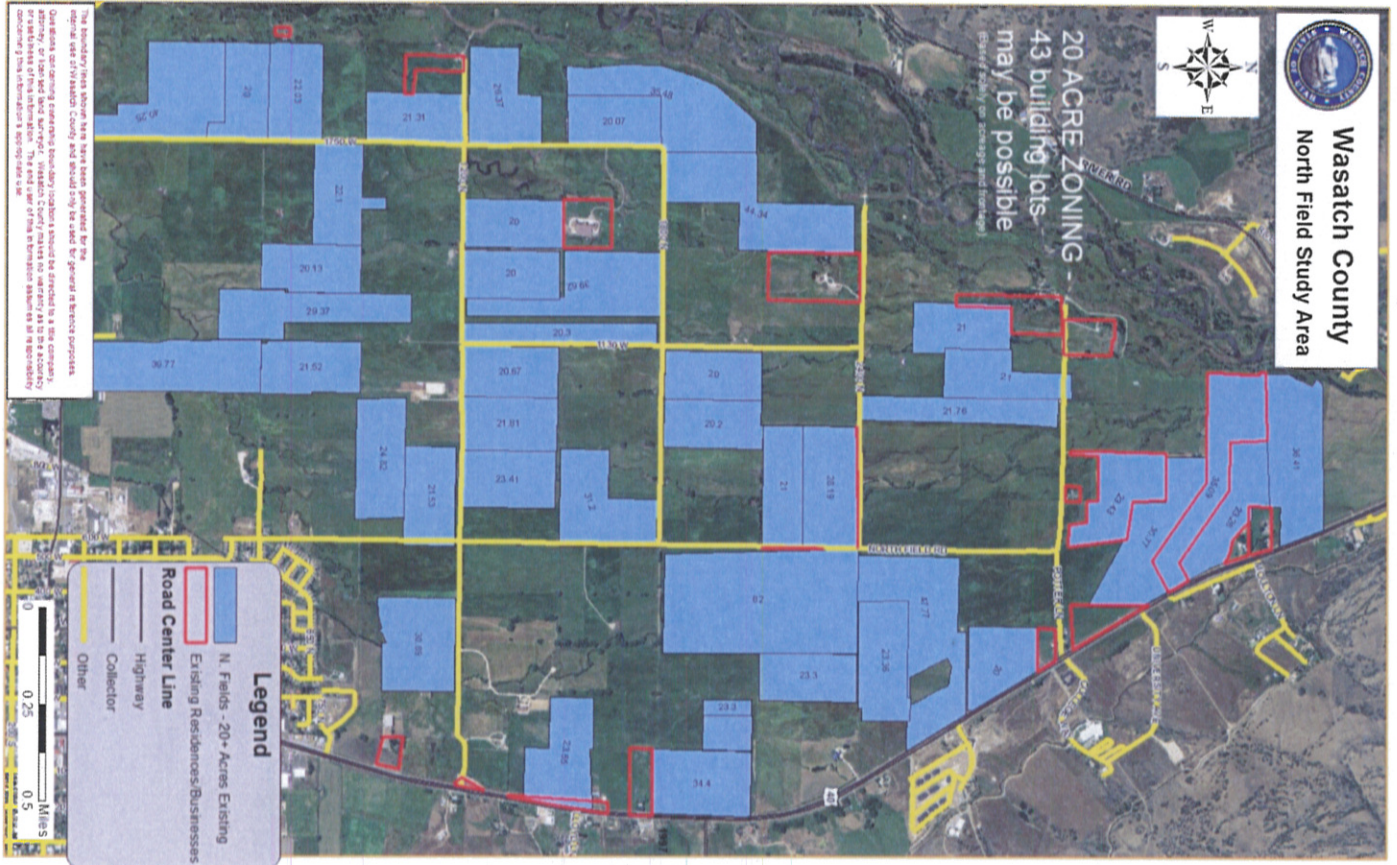




Wasatch County
North Field Study Area



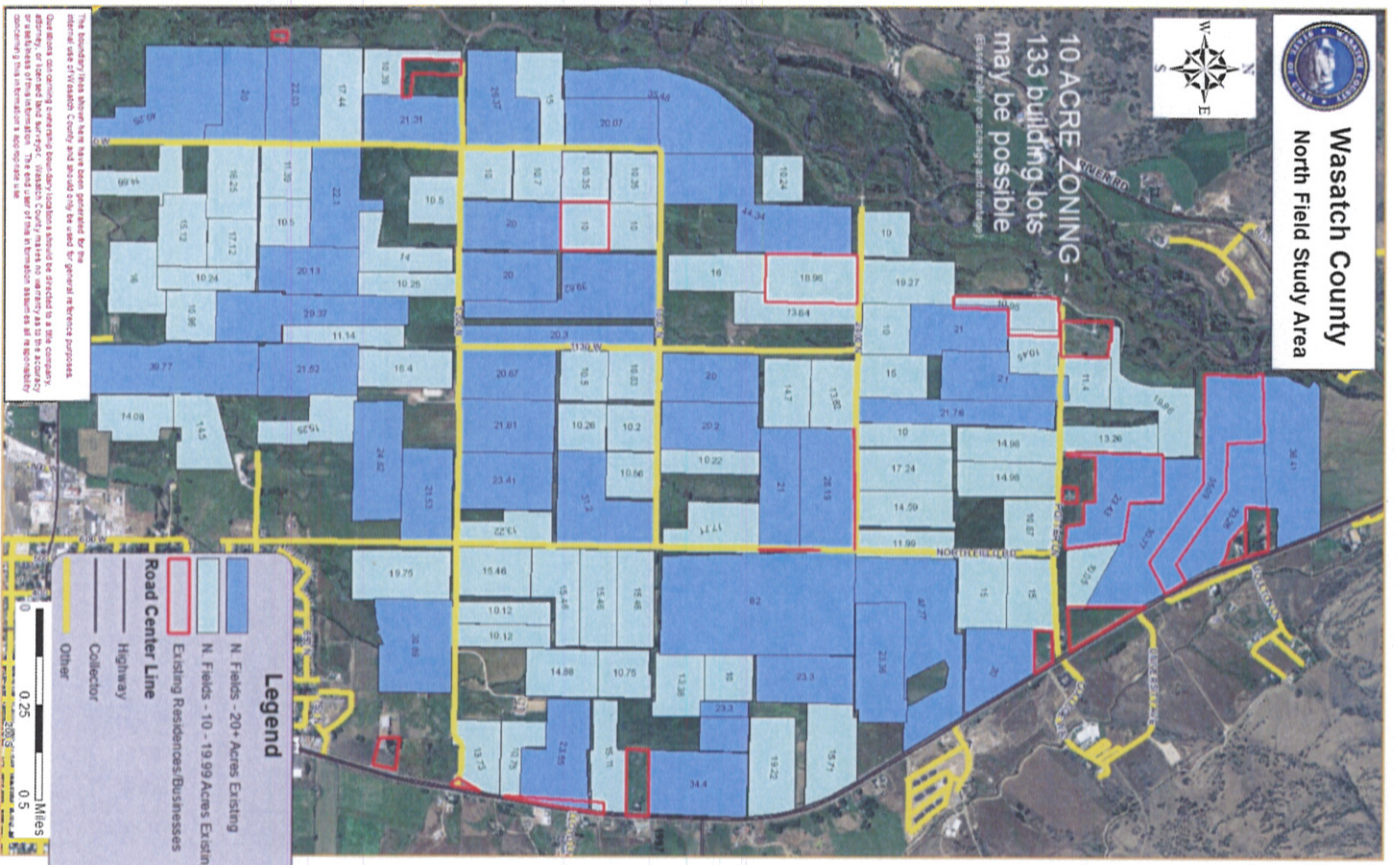
20 ACRE ZONING -
43 building lots
may be possible
(Based on zoning, acreage, and frontage)



Wasatch County
North Field Study Area



10 ACRE ZONING -
133 building lots
may be possible
(Based on zoning, acreage, and frontage)



- Study area 2791 acres
- Roads 60 ROW 113 acres
- Streams 30' ROW 74 acres
- Ditches 30' ROW 133 acres
- Wetlands* 713 acres
- Constrained land 1,033 acres total
- Developable 1,757 acres
- w/o wetlands 2,470 acres
- 10-acre lots 176/247 using wetlands
- 20-acre lots 88/124 using wetlands

*This dataset represents wetland areas as delineated by the National Wetlands Inventory (NWI) conducted by the US Fish and Wildlife Service (USFWS).

